

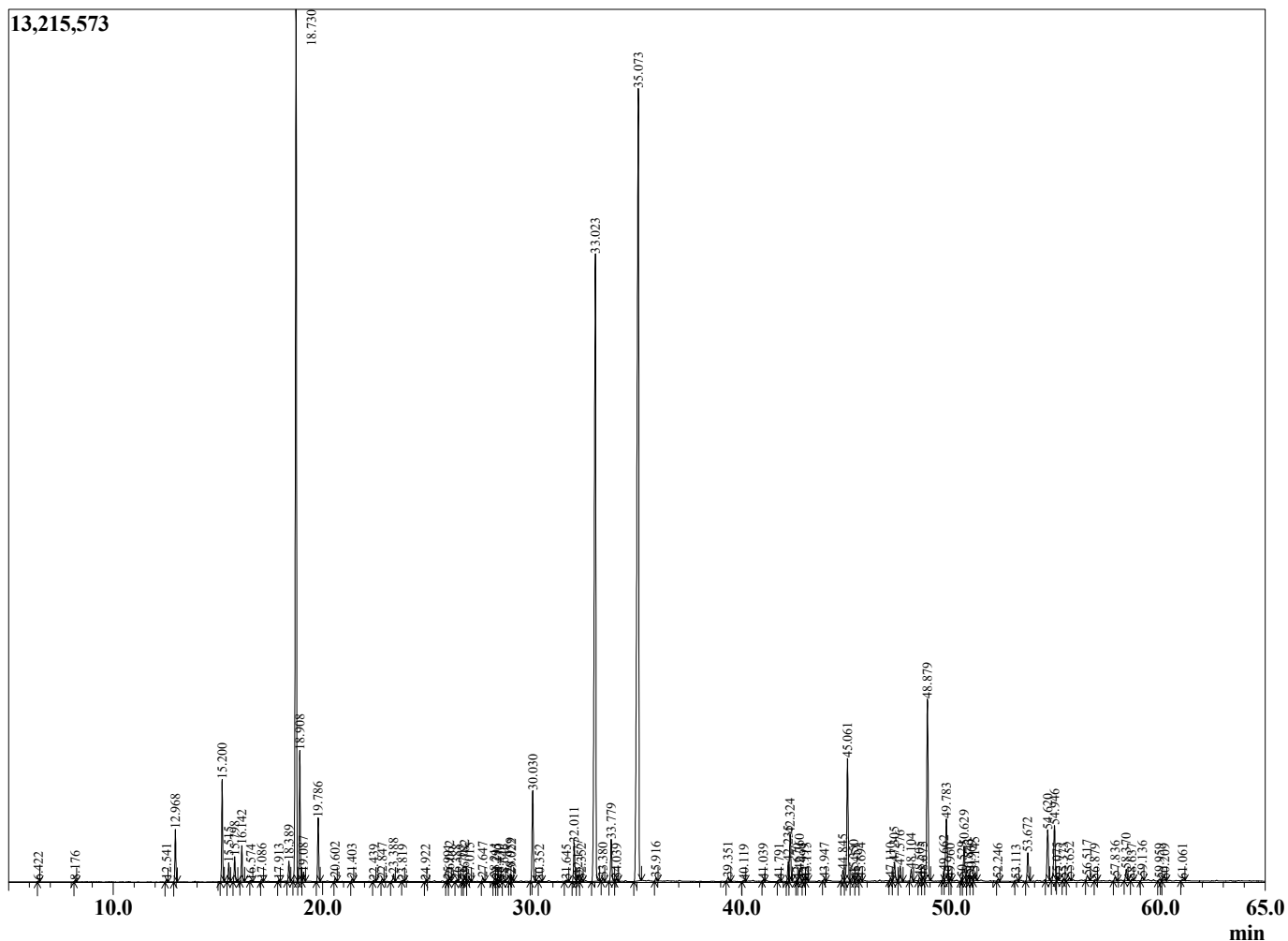
Sample Information

Sample Type : Essential Oil
 Sample Name : Lippia citriodora
 Injection Volume : 0.10

Lemon Verbena
 Lot# FRH2-HE
 Country: France



Chromatogram Lippia citriodora



R.Time	Name	Area%
6.422	Methyl 2-methylbutyrate	0.01
8.176	Unidentified	0.03
12.541	alpha-Thujene	0.05
12.968	alpha-Pinene	0.97
15.200	Sabinene	1.91
15.515	beta-Pinene	0.37
15.798	6-Methyl hept-5-en-2-one	0.49
16.142	Myrcene	0.71
16.574	Octan-3-ol	0.02
17.086	Pseudolimonene	0.04
17.913	alpha-Terpinene	0.03
18.389	para-Cymene	0.42
18.730	Limonene	19.42
18.908	1,8-cineole	2.55
19.087	(Z)-beta-Ocimene	0.18
19.786	(E)-beta-Ocimene	1.28
20.602	gamma-Terpinene	0.08
21.403	trans-Sabinene hydrate	0.05
22.439	Terpinolene	0.02
22.847	Rosefuran	0.06
23.388	Linalool	0.18
23.819	alpha-Pinene oxide	0.02
24.922	trans-para-Mentha-2,8-dien-1-ol	0.02
25.991	Unidentified	0.04
26.062	Epiphocitral A	0.10
26.388	exo-Isocitral	0.03
26.702	Unidentified	0.02
26.782	trans-Chrysanthemal	0.15
27.015	Citronellal	0.07
27.647	Isoneral	0.08
28.211	Isoborneol	0.07
28.295	delta-Terpineol	0.05
28.430	Borneol	0.04
28.646	Unidentified	0.02
28.959	Isogeranial	0.16
29.022	Terpinen-4-ol	0.13
30.030	alpha-Terpineol	2.09
30.352	cis-Isopiperitenol	0.04
31.645	Unidentified	0.05
32.011	Nerol	0.89
32.177	Citronellol	0.16
32.352	Isogeranial	0.05
33.023	Neral	18.32
33.380	Carvone	0.07
33.779	Geraniol	0.98
34.039	Piperitone	0.06
35.073	Geranial	26.54
35.916	trans-Carvone oxide	0.07
39.351	delta-Elementene	0.11
40.119	Unidentified	0.03
41.039	Unidentified	0.03
41.791	Unidentified	0.04
42.235	alpha-Copaene	0.44
42.324	Geranyl acetate	1.15
42.670	Unidentified	0.03
42.760	beta-Bourbonene	0.33

R.Time	Name	Area%
42.999	Unidentified	0.06
43.115	beta-Elemene	0.06
43.947	Unidentified	0.06
44.845	alpha-Cedrene	0.30
45.061	trans-beta-Caryophyllene	3.27
45.350	beta-Cedrene	0.16
45.451	Unidentified	0.06
45.694	beta-Copaene	0.06
47.110	(E)-beta-Farnesene	0.06
47.305	alpha-Humulene	0.50
47.576	Alloaromadendrene	0.40
48.104	Geranyl propanoate	0.31
48.505	trans-Cadina-1(6),4-diene	0.09
48.675	gamma-Curcumene	0.07
48.879	Ar-Curcumene	4.80
49.662	alpha-Zingiberene	0.19
49.783	Bicyclogermacrene	1.96
49.960	alpha-Muurolene	0.04
50.529	beta-Bisabolene	0.08
50.629	beta-Curcumene	0.89
50.843	gamma-Cadinene	0.17
50.969	Cubebol	0.14
51.145	delta-Cadinene	0.21
52.246	Unidentified	0.05
53.113	Unidentified	0.04
53.672	trans-Nerolidol	0.69
54.620	Spathulenol	1.35
54.946	Caryophyllene oxide	1.55
55.075	Unidentified	0.03
55.373	Unidentified	0.04
55.652	Unidentified	0.09
56.517	Cedrol	0.17
56.879	Unidentified	0.03
57.836	Unidentified	0.10
58.370	tau-Cadinol	0.29
58.637	Unidentified	0.03
59.136	alpha-Cadinol	0.09
59.959	Unidentified	0.05
60.209	Unidentified	0.05
61.061	Unidentified	0.04
		100.00